



SCHLEIFENBAUER

Business operations ecological footprint



Environmental, Social en Governance

Content

1	About Schleifenbauer	3
2	ESG	4
3	Products	5
4	Production process	6
5	Suppliers	7
6	People and Society	8
7	Sustainability	9
8	CO2 Emissions	10
9	CO2 Target roadmap	12



1. About Schleifenbauer

Schleifenbauer is a Dutch manufacturer of intelligent power distribution systems (Power Distribution Units). The intelligence lies in energy measurement and remotely switchable hardware per outlet, particularly for data centre applications. Schleifenbauer custom-builds these PDUs in 's-Hertogenbosch for its clients. Since 2008, Schleifenbauer Products B.V. has existed in its current form.

One of the positive aspects of our PDUs is that the configuration is tailored to the infrastructure of our customers, rather than the other way around. This is because we believe that the PDU is a critical element at the intersection of our clients' infrastructure and IT environment—a junction where we feel there is no room for compromise. To achieve this, our production process is software driven. We have grown by providing customised solutions without the drawbacks of high sales prices or long lead times.

We design and manufacture PDUs with integrated energy meters for total power, by branch group, by phase, or individually per outlet, along with the capability to switch outlets on and off remotely. Our intelligent PDUs offer the convenience of quick and easy installation and the assurance of communication with open platforms.



Socially Responsible Aspects of the Managed PDU

Our Managed PDU provides advanced energy measurement and insights into power consumption, including the Power Usage Effectiveness (PUE) of your data centre. This helps in identifying servers that consume power without being used. Once identified, these servers can be switched off via the PDU, contributing to energy efficiency and waste reduction. Choose a customised Managed PDU to enhance both your energy management and your ecological footprint.



Socially Responsible Aspects of the Inline Meter PDU

Upgrade your existing basic PDU to a smart, measurable PDU without the need for replacement. This prevents waste by extending the lifespan of your current equipment and reducing waste. Additionally, it saves costs and maximises the efficiency of your data centre by monitoring and optimising energy consumption. Choose a sustainable and cost-effective solution with the Inline Meter PDU.



2. ESG

Environmental, Social, and Governance (ESG) is the new Corporate Social Responsibility (CSR). Although CSR has been a point of focus for many years, ESG has now emerged and is primarily viewed as an international term for CSR. However, ESG has different focal points, represented by the 17 Sustainable Development Goals (SDGs), which are objectives established by the United Nations to be achieved by 2030.



ESG is deeply embedded in the DNA of Schleifenbauer, and concrete steps have already been taken towards pursuing several SDGs. For instance, Schleifenbauer is actively working on reducing its ecological footprint, minimising packaging, and even offering packaging-free delivery, as well as ensuring equal opportunities for everyone and finding the right partners to achieve these objectives.

3. Products

The ICT sector is estimated to be responsible for 5% to 10% of global electricity consumption. The nature of our products encourages our customers to achieve energy savings. Think of it as a fuel gauge in a car; the driver is prompted to use fuel more efficiently (as evidenced in various publications). The savings that follow are not directly measurable, but estimates from similar situations involving consumption meters indicate that 5-10% savings can be attributed solely to the act of measuring. By providing our technology to our customers, the savings realised through the use of our PDUs with energy meters can be considered substantial.



As a pioneer in the PDU industry, we have been the first to market several energy- and environmentally-saving innovations:

Bi-stable relays: These relays consume no energy, resulting in up to 90% energy savings compared to conventional relays.

LCD display with auto power-off: This feature reduces unnecessary energy consumption by automatically switching off when not in use.

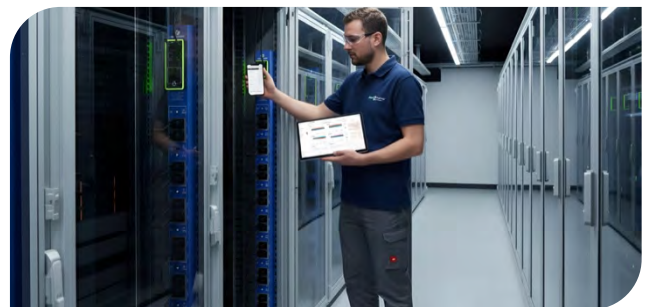
PVC-free PDUs: Our PDUs are completely free of PVC, minimising environmental impact.

Halogen-free cables: Standard on all our PDUs, promoting a safer and more environmentally friendly working environment.

Other manufacturers have now adopted these groundbreaking innovations, highlighting our commitment to sustainability and energy efficiency.

Sustainability is also a key consideration in the design of our PDUs. For instance, when creating the plastic casing, we strive to use as much recycled material as possible. Naturally, the product must meet certain quality standards, so there are times when it is unavoidable to use less sustainable materials. However, as our Head of Engineering, René van Haarst, says: "If you're going to design it, design it so well that it doesn't break."

Schleifenbauer PDUs play a leading role in energy efficiency. Given the high energy consumption in data centres, every penny saved can make a significant difference. In data centres where hundreds, and sometimes even thousands, of PDUs are used, this can translate to a savings difference of 35,000 kWh to 500,000 kWh, equating to approximately €5,000 to €75,000 per year!



All Schleifenbauer PDUs delivered in a year save approximately 1.5 tonnes of CO2 emissions compared to other PDUs. This is based on an average saving of 15 watts per PDU.

"We cannot ensure that all equipment connected to the PDU will consume less, but by making consumption transparent, companies can detect where high usage occurs more quickly and adjust accordingly. We certainly contribute to that." - Jan de Haan, Director of Schleifenbauer.

4. Production Process

To guarantee our quality, we manage the production process ourselves. Schleifenbauer is certified to ISO 9001:2015 according to international standards for quality management.

In 2025, Schleifenbauer Products B.V. was reassessed by EcoVadis. The purpose of an EcoVadis assessment is to provide a clear and objective view of a company's performance in the field of Corporate Social Responsibility (CSR). Practices are evaluated across four key themes: Environment, Labour and Human Rights, Ethics, and Sustainable Procurement.

Schleifenbauer achieved a score of over 65/100. For this performance, a Silver EcoVadis medal was awarded. The Silver medal is granted to companies ranking among the top-performing organisations assessed by EcoVadis worldwide, reflecting a strong and well-established approach to sustainability and responsible business practices.



Our production process is one of the most environmentally friendly available. We only manufacture products that have been sold (build-to-order), meaning there are no stockpiles of finished products, and therefore no need for storage or additional transport. We ship our products directly from the factory to the end users. Our suppliers are selected partly based on their proximity to our assembly site, further minimising unnecessary transport.



Internally, we strive to recycle using separate bins and manage our waste stream as efficiently as possible. All types of waste are segregated and collected by specialised waste management companies for recycling. Water is not used in our production process, ensuring no waste. We are always looking for ways to improve, aiming to recycle or make recyclable every component used in the production process. Steps are also being taken in terms of customer deliveries and sourcing materials. Schleifenbauer increasingly delivers without packaging, with special trolleys developed to transport the PDU's without the need for cardboard. When sourcing materials, we prioritise local suppliers, reducing transport distances. We are also working with suppliers to deliver without packaging, which is made easier by our long-term contracts with them. Initial steps have been taken with the purchase of reusable containers for continuous use.

"Delivering without packaging saves us paper, cardboard, and time, but it also saves time and reduces waste for the customer. This has been a huge success, and we're looking to expand it further." – Edward Goudsmits, Head of Operations

"Customers must set high standards for power distributors and energy meters; once installed, Schleifenbauer products are in use 24/7. Therefore, Schleifenbauer sets the bar high for its own products and all processes and activities. To uphold our mission, any (potential) improvements will be thoroughly followed up. In our weekly Management Team (MT) meetings, continuous improvements and actions are discussed, determined, and followed up."



5. Suppliers

Schleifenbauer's PDUs are produced in the Netherlands. Alongside our product quality, this is an attractive proposition for data centres and industries where 'buy local' is a key focus.

Schleifenbauer primarily works with regional suppliers. Our suppliers are required to source their raw materials, semi-finished products, and goods in an ethical manner. Companies that procure materials such as tin, tungsten, tantalum, or gold are expected to disclose this information publicly.

In the selection of components and semi-finished products, we consciously seek high quality from regional suppliers and partners, with whom we often have long-standing and successful collaborations. Our PDU's are comprised of various parts, primarily sourced from the Netherlands. In other cases, components are sourced from Germany, Belgium, and the United Kingdom. Wherever possible, suppliers deliver in bulk and without packaging.

Schleifenbauer does not tolerate any form of modern slavery, forced labour or human trafficking within its operations or supply chain. We expect all suppliers and business partners to respect human rights and comply with applicable labour laws and ethical standards.



6. People and Society

One of the defining characteristics of Schleifenbauer is flexibility. We are highly adaptable, not only in terms of product and configuration flexibility but also in our relationships with customers and suppliers. This level of flexibility is only possible because, as an organisation, we remain flexible ourselves. By adopting a flexible approach as employers, we can expect the same flexibility from our team members. Schleifenbauer is neither bureaucratic nor strictly hierarchical; everyone has their own responsibilities and contributes value to the company. A key aspect of our culture is the high level of interaction we encourage. For example, we all share lunch together in the canteen every day, fostering a positive and enjoyable working atmosphere.

Schleifenbauer encourages its team to find joy in their work within a professional setting. Our employees are motivated to give their best in a modern and friendly work environment. Schleifenbauer feels a responsibility to open doors for individuals with disabilities, diverse ethnic backgrounds, various sexual orientations, older age, and those distanced from the job market.

In 2021, Schleifenbauer released a new employee handbook that thoroughly outlines the company's policies. It includes extensive information on employee rights and human rights. Improving society is also a hallmark of Schleifenbauer. One or two times a year, we strive to donate to a charity in some way. An example of a charity that Schleifenbauer has funded is the Nioki project in the Democratic Republic of the Congo. This funding has led to the construction of a workshop and the donation of a laboratory for blood testing. Additionally, we organised the funding for a new X-ray machine, along with furniture, tools, and materials to make the workshop fully operational.

By being operational, the waiting time for on-site adjustments and placements of prosthetics, such as artificial legs and other aids, is significantly reduced. Furthermore, patients can recover much faster. The prosthetics are now made in the Congolese capital, Kinshasa, and flown to Nioki. If a prosthetic does not fit properly or other issues arise, they can now be resolved in Nioki without the need to send the prosthetic back to Kinshasa. This provides a significant benefit to the patient. More information and images of the project can be found at: <http://nioki.schleifenbauer.eu>.

Schleifenbauer is committed to respecting and protecting human rights within its organisation. We promote equal opportunities, a safe and inclusive working environment, and fair employment practices for all employees, in line with applicable labour laws and internationally recognised human rights principles.



7. Sustainability

There are several more ways in which Schleifenbauer contributes to ESG policies. Schleifenbauer uses sustainable materials as much as possible for the production of its PDUs. Aluminium is a material that can be 100% recycled once the product's lifecycle has ended. Our suppliers are also selected based on quality, sustainability, and their environmental impact. Schleifenbauer goes a step further by being the first PDU manufacturer to ensure that its products are 100% halogen-free.

Schleifenbauer believes that cheap production in countries with low ethical wages is wrong and produces its products using as many regionally sourced components as possible. Through our specialisation in customised PDUs, we can offer a product that contains only the right components without waste.

Furthermore, all documents used within the company are digital. All correspondence, such as quotes, packaging, and invoices, is sent digitally, and printing on paper is always avoided. Limiting travel as much as possible is also a policy within Schleifenbauer, with encouragement to use public transport, electric vehicles, or bicycles whenever feasible. The Schleifenbauer fleet primarily consists of electric and Hybrid cars.



8. CO₂ - Emissions

At Schleifenbauer, we monitor and evaluate our CO₂ emissions using the EcoVadis Carbon Estimator, based on our operational data, energy consumption, and business activities. This enables us to gain clear insight into our environmental impact and take targeted actions to reduce emissions.

Total CO₂ Emissions

The total greenhouse gas (GHG) emissions of Schleifenbauer for 2025 amount to:

- Total emissions: 442.14 tCO₂e
- Scope 1: 26 tCO₂e
- Scope 2 (market-based): 0 tCO₂e
- Scope 3: 416.14 tCO₂e

Scope 1 Emissions

Scope 1 emissions are direct emissions from sources owned or controlled by Schleifenbauer, such as fuel combustion in facilities and company vehicles.

- Total Scope 1 emissions: 26 tCO₂e
- Stationary combustion (natural gas): 25 tCO₂e
- Mobile combustion (diesel vehicle): 1 tCO₂e

These emissions primarily originate from natural gas consumption at our facility and limited use of a diesel vehicle for logistics purposes.

Scope 2 Emissions

Scope 2 emissions are indirect emissions from purchased energy.

- Market-based emissions: 0 tCO₂e
- Location-based emissions: 29 tCO₂e

Schleifenbauer sources its electricity from 100% renewable energy through a certified supplier (Greenchoice). As a result, market-based Scope 2 emissions are zero in accordance with the GHG Protocol.

Scope 3 Emissions:

Scope 3 emissions include all other indirect emissions across our value chain.

- Total Scope 3 emissions: 416.14 tCO₂e
- Upstream emissions: 152.08 tCO₂e
- Downstream emissions: 264.05 tCO₂e

These emissions mainly relate to:

- Purchased goods and materials
- Transport and distribution
- Business travel
- Waste generated in operations
- End-of-life treatment of products

Schleifenbauer's products (PDUs) are **passive power distribution devices** and do not consume energy themselves. Therefore, emissions from the "use of sold products" category are excluded.

Conclusion

Schleifenbauer's CO₂ footprint is primarily driven by Scope 3 emissions, particularly those associated with purchased materials and logistics.

At the same time, the company benefits from:

- The use of 100% renewable electricity, resulting in zero market-based Scope 2 emissions
- A local and European supply chain, reducing transport-related emissions
- Durable products with long lifecycles, minimising environmental impact over time

Schleifenbauer remains committed to continuously improving its environmental performance by increasing transparency, optimising its supply chain, and further reducing emissions where possible.



9. CO₂ – Target roadmap

Schleifenbauer is committed to reducing its greenhouse gas emissions across all scopes, based on the 2025 baseline year.

Targets by 2030

- Scope 1: 25% reduction compared to 2025
- Scope 2: Maintain near-zero emissions through continued use of 100% renewable electricity
- Scope 3: 20–30% reduction compared to 2025

Interim Targets (by 2028)

- **Scope 1:** 10–15% reduction
- **Scope 2:** Maintain 0 tCO₂e (market-based)
- **Scope 3:** 10–20% reduction

Scope 1 (Direct Emissions)

Actions:

- Reduction of natural gas consumption through optimisation of heating systems
- Improved insulation and temperature control in the facility
- Limited use of fossil-fuel vehicles and evaluation of electrification where feasible

Scope 2 (Purchased Energy)

Schleifenbauer already operates on 100% renewable electricity, resulting in:

- 0 tCO₂e market-based emissions

Focus:

- Maintaining renewable energy sourcing
- Continuous monitoring of energy efficiency
- Further reduction of overall electricity consumption

Scope 3 (Value Chain Emissions)

Key reduction areas:

Transport & Logistics

- Increasing use of local and European suppliers
- Collaboration with low-emission or CO₂-neutral transport partners
- Encouraging ex-works deliveries

Production & Materials

- Build-to-order production to minimise waste
- Reduction of packaging and expansion of packaging-free delivery
- Increased use of recyclable materials

Business Travel

- Minimising air travel
- Promoting electric mobility and digital meetings

CO₂ Impact Strategy

Schleifenbauer focuses on:

- Low-emission operations (renewable energy, efficient processes)
- Local supply chains to reduce transport emissions
- Long product lifespan, reducing lifecycle impact
- Continuous optimisation of materials and logistics

Schleifenbauer Products BV
Het Sterrenbeeld 52
5215 ML 's-Hertogenbosch
The Netherlands

+ 31 73 523 0256

info@schleifenbauer.eu

www.schleifenbauer.eu

