

# DPM3

Three phase miniature smart energy meter



## SUMMARY

- Compact 2 DIN design
- Smart communications
- Plug & play installation
- Optional residual current sensor
- Also suitable as three channel single phase meter
- Embedded webinterface

## FEATURES

Versatile compact 3 channel energy meter. Just 2 DIN units wide makes it the ideal device for metering in small areas such as tap-off boxes or compact electrical cabinets.

The DPM3 can be connected to closed or split core current transformers up to 63A per channel, or up to 1200A per channel with use of a second transformer. It has an ethernet port as well as databus connectors to offer you a wide range of connectivity options, multiple units may share a common ethernet connection. No need to worry about interfacing to other platforms.

The sensor port offers additional sensor connections to environmental sensors or even a residual current sensor.

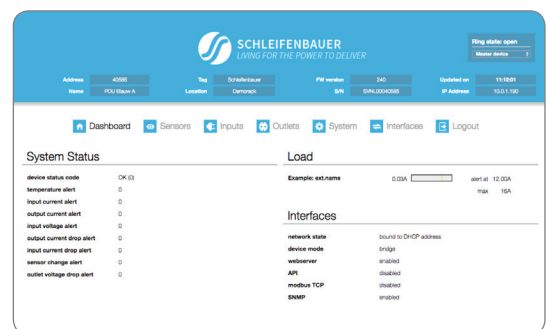


Image: Webinterface



## CASE

TYPE	EXTENDED HEIGHT 2 DIN ENCLOSURE
DIMENSIONS	90 X 70 X 36 MM
WEIGHT	125 G
CONNECTIONS	CT: 6 X 1 MM <sup>2</sup> SCREW TERMINALS N, L1, L2, L3: 4 X 2,5 MM <sup>2</sup> SCREW TERMINALS 2 X DATA BUS (HAR-FLEXICON), ETHERNET (RJ45), SENSOR (RJ12)
BUTTONS	PAGE LEFT AND RIGHT, RESET
IP RATING	IP20
FIRE RESISTANCE CLASS	UL94-V2

## DISPLAY

TYPE	BACKLIT LCD
RESOLUTION	64 X 128 PIXELS, MONOCHROME
LEDS	KWH IMPULSE LED; POWER ACTIVITY LED

## SENSOR PORT

DIGITAL SENSOR PORT	DIGITAL TEMPERATURE / HUMIDITY SENSOR RESIDUAL CURRENT SENSOR CONNECTS TWO DRY SWITCH CONTACTS
---------------------	--

## COMMUNICATIONS PORTS

RS485 DATA BUS	2 X DAISY CHAINABLE 115KBPS SERIAL DATA BUS PORTS
ETHERNET PORT	10/100MB ETHERNET PORT WITH LINK/ACT LED
PROTOCOLS	IPV6, SNMP V1, V2C, V3, MODBUS, HTTP, API EXPANDABLE BY FIRMWARE UPGRADES

## OPERATING CONDITIONS

TEMPERATURE	0 TO 55° C
HEIGHT	-30 TO 2000M
RELATIVE HUMIDITY	10 TO 90% NON CONDENSING
POLLUTION CLASS	2
INSTALLATION CATEGORY	III
MEASUREMENT CAT.	III
PROTECTION CLASS	II
WORKING CONDITIONS	CONTINUOUS

## ELECTRICAL ENVIRONMENT

VOLTAGE	THREE-PHASE 3 X 230/400V+N, 3 X 208V, SINGLE-PHASE 120..230V+N (+/- 10%)
SYSTEM	THREE-PHASE: FOUR-WIRE STAR; EARTHED NEUTRAL, THREE-PHASE: THREE-WIRE DELTA (208V PHASE TO PHASE ONLY) SINGLE-PHASE: TWO-WIRE; EARTHED END OF PHASE
FREQUENCY	50..60HZ (+/- 10%)

## POWER CONSUMPTION

POWER SUPPLY	MAX 2 WATT
VOLTAGE MEASUREMENT CIRCUIT	MAX 0.5 VA AND 0.1W
CURRENT MEASUREMENT CIRCUIT	MAX 0.07 VA

## MEASUREMENTS

UPDATES	2 MEASUREMENTS/SECOND
RMS SAMPLING FREQUENCY	26 KHZ
VOLTAGE	85 TO 265 V AC
CURRENT, VIA STANDARD 1:2500 CT	20MA TO 63A
CURRENT, VIA ADDITIONAL 1200/5 CT	3A TO 1200A
POWER FACTOR	0 TO 100%
KWH TOTAL	0 TO 16777215
KWH SUBTOTAL (RESETTABLE)	0 TO 16777215
FIXED KWH OPTICAL IMPULSE RATE	3200 IMP/KWH

## ACCURACY

VOLTAGE	± 0.5% (100 TO 240 V)
CURRENT	± 0,5% (0,5 A TO 32 A)
ENERGY	± 1%, IEC62053-21 ACCURACY CLASS 1

## STANDARDS CONFORMANCE

2006/95/EC	LOW VOLTAGE DIRECTIVE
2004/108/EC	ELECTROMAGNETIC COMPATIBILITY DIRECTIVE
EN 61010-1	ELECTRICAL SAFETY
IEC 60947-1	4KV IMPULSE WITHSTAND VOLTAGE
ROHS2	FULLY COMPLIANT
UL LISTING	LISTED, FILE E467602
CE MARK	CB REPORT DK-51969-UL
MID CERTIFICATION	PENDING
STATUS	V1.0, JULY 2017



**SCHLEIFENBAUER**  
LIVING FOR THE POWER TO DELIVER

© Copyright 2017, Schleifenbauer Products BV. All rights reserved.  
Unauthorized use and/or duplication of this material without express and written permission from Schleifenbauer Products BV is not allowed.  
Information contained in this data sheet is up-to-date and correct as at the date of issue. As Schleifenbauer Products cannot control or anticipate the conditions under which this product may be used, each user should review the information in specific context of the planned use. To the maximum extent permitted by law, Schleifenbauer Products will not be responsible for damages of any nature resulting from the use or reliance upon the information contained in this data sheet. No express or implied warranties are given other than those implies mandatory by law.